

# LACOMET® FL

ALUMINIUM SHEET LEAD ALTERNATIVE

**Lifetime expectancy: 50 years  
Guarantee  
: 10 years**

## LACOMET® FL

LACOMET® FL is modern, especially developed for construction, universally applicable, extremely lightweight, durable and environmentally reliable.

### The product

LACOMET® FL is sheet lead alternative on the basis of aluminium! This innovative product consists of two coil coated, corrosion-resistant, unalloyed layers of aluminium with an inlay of fibre strengthened composite. LACOMET® FL can be used for almost every conceivable sort of water-proofing lead covering in new buildings, renovations and re-building.

### Identifying properties

- Lead-free
- Very light-weight
- Corrosion-resistant
- Durable
- Recyclable
- Thin
- Pliable
- Retains shape
- Low expansion coefficient
- UV resistant
- Temperature-resistant
- Limited fire-resistance
- Metal colour
- Matt grey colour

### Application possibilities

- Lead flashings
- Cavity tray flashings
- Lead copings
- Apron flashings
- Stepped flashings
- Ridge flashings
- Corner flashings
- Soakers
- Saddles
- Window and door joints
- Lintel joints
- Abutment flashings
- Chimney connection features
- Valley trough flashings
- Secret gutter flashings



### Fixing / Installation

Guidelines and instructions on cutting, bending/folding, overlapping, seams/joints and colours for the fixing of LACOMET® FL are available on a separate data sheet. It comprises instructions relating to cutting to size, bending / folding into the desired shape, overlapping and connections and the possible finishing in the required colour.





**Characteristic to the processing of LACOMET® FL is that the product:**

- Is easily cut to size with a Stanley knife, scissors or tin snips.
- Can be fixed in lengths of 3 to 4 metres or more.
- Can be used for large widths.
- Has a low sagging and collapse factor.
- Can be fixed with LACOMET® Adhesive Mastic or mechanically fixed.
- Can be hammered but not hammered out.
- Can be processed easily at low temperatures (to -20° C).
- Easy to fabricate pre-formed elements.
- Is easily painted over.

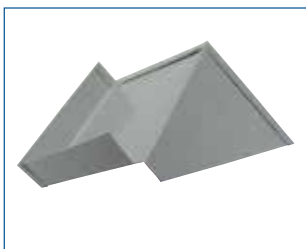
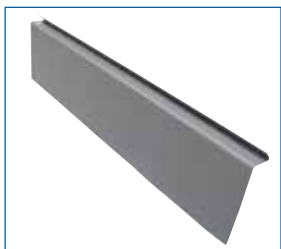
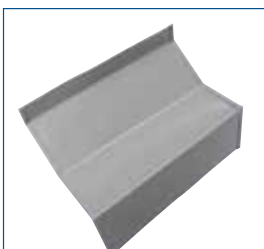


**Reports**

BDA nr. 06-G-0215 relating to the processing of LACOMET® FL, the combination possibilities with roofing systems, the resistance to thermal shock, how waterproof the features / joints are.

**Service and advice**

If you have any questions you may contact your supplier or our technical advisors directly. They will be able to provide extensive advice about the technical possibilities and the applications of LACOMET® FL sheet lead.



**Technical properties**

Length	: handy rolls of 6 and 10m <sup>1</sup>
Width range	: 100-1000mm
Standard widths	: 100, 150, 250, 330,400, 500 and 1,000mm
Thickness	: 0.6 mm
Weight	: 1.05 kg /m <sup>2</sup>
Aluminium quality	: unalloyed
Stability	: -50 to + 150°C
Expansion coefficient	: < 32 micron per m / °C
Heat conducting coefficient	: approx. 1.00 W/mK
Combustibility	: non combustible
Tensile strength	: 200 N/mm <sup>2</sup>
Colour	: RAL 7037 (dusty grey)



- P.O. Box 120
- 3300 AC Dordrecht (NL)
- Pieter Zeemanweg 107
- The Netherlands
- Tel: +31 78 617 4400
- Fax: +31 78 617 44 00
- Email: reppel@reppel
- Website : www.reppel.nl

LACOMET® FL is the deposited trade mark of Reppel b.v. Bouwspecialiteiten in Dordrecht, The Netherlands