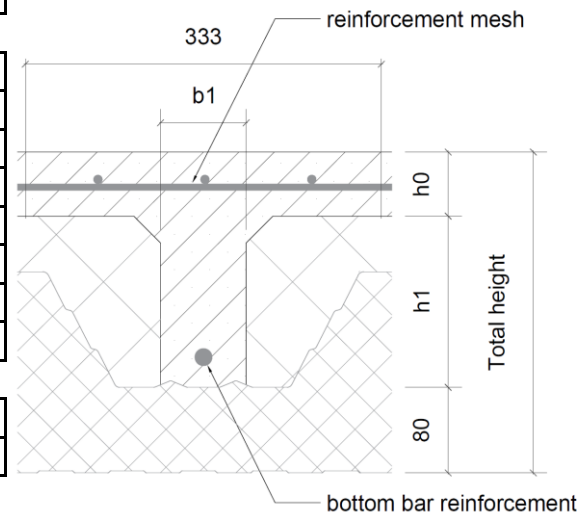


DESIGN TABLES
Office

	Single span				Double span			
	4000 mm	4500 mm	5000 mm	5500 mm	4000 mm	4500 mm	5000 mm	5500 mm
Width (b1)	60	60	60	60	60	60	60	60
Height (b1)	140	140	160	170	140	140	140	140
Flange thickness (h0)	50	50	50	50	50	60	60	60
Bottom bar reinforcement	∅12	∅16	∅20	∅20	∅8	∅10	∅10	∅16
Reinforcement mesh	#5 - 200	#5 - 150	#6 - 200	#6 - 150	#7 - 150	#8 - 150	#8 - 100	#8 - 100
Concrete grade	C30/37	C30/37	C30/37	C30/37	C30/37	C30/37	C30/37	C30/37
Concrete volume m ³ /m ²	0,075	0,075	0,079	0,081	0,075	0,085	0,085	0,085
Concrete weight kg/m ²	180,5	180,5	189,1	193,4	180,5	204,5	204,5	204,5
Total height incl. panel	270	270	290	300	270	280	280	280
Total own weight kg/m ²	200,5	200,5	209,1	213,4	200,5	224,5	224,5	224,5
RC value m ² K/W	6,4	6,4	6,9	7,1	6,4	6,4	6,4	6,4
U-value W/mK	0,1552	0,1552	0,1447	0,1399	0,1552	0,1551	0,1551	0,1551


Assumptions:

Loading:

- Live load 2,50 kN/m²
- Light partitions 1,00 kN/m²
- Deflection 0,004 * span (max. 15 mm)

Berekeningsgrondslagen:

- Calculations conform NEN-EN 1990, NEN-EN 1991-1-1, NEN-EN 1992-1-1, NEN-EN 1994-1-1
- Exposure class XC1

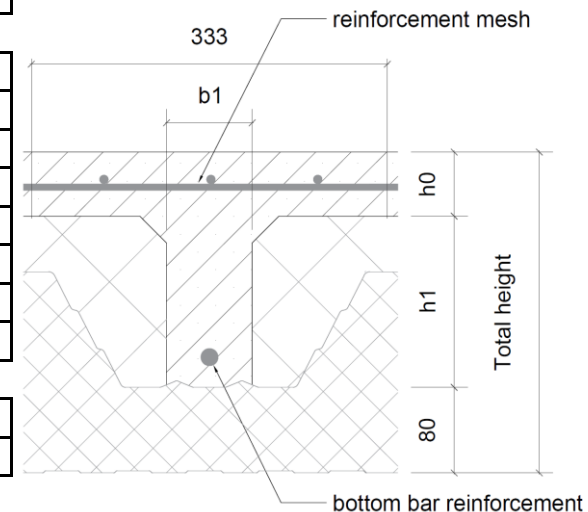
These tables are indicative. Other spans / loading / U-value on request

DESIGN TABLES

Industrial building

Single span				Double span			
4000 mm	4500 mm	5000 mm	5500 mm	4000 mm	4500 mm	5000 mm	5500 mm

Width (b1)	60	60	60	60	80	80	80	100
Height (b1)	140	140	170	200	140	140	140	150
Flange thickness (h0)	50	50	50	50	50	60	60	60
Bottom bar reinforcement	Ø16	Ø16	Ø20	Ø20	Ø10	Ø12	Ø12	Ø16
Reinforcement mesh	#5 - 150	#5 - 150	#6 - 150	#6 - 150	#6 - 100	#8 - 150	#8 - 100	#8 - 100
Concrete grade	C30/37	C30/37	C30/37	C30/37	C30/37	C30/37	C30/37	C30/37
Concrete volume m ³ /m ²	0,075	0,075	0,081	0,086	0,084	0,094	0,094	0,105
Concrete weight kg/m ²	180,5	180,5	193,4	206,4	200,6	224,6	224,6	252,0
Total height incl. panel	270	270	300	330	270	280	280	290
Total own weight kg/m ²	200,5	200,5	213,4	226,4	220,6	244,6	244,6	272,0
RC value m ² K/W	6,4	6,4	7,1	7,8	6,2	6,2	6,2	6,1
U-value W/mK	0,1552	0,1552	0,1399	0,1274	0,1611	0,1610	0,1610	0,1619



Assumptions:

Loading:

- Live load 5,00 kN/m²
- Deflection 0,004 * span (max. 15 mm)

Berekeningsgrondslagen:

- Calculations conform NEN-EN 1990, NEN-EN 1991-1-1, NEN-EN 1992-1-1, NEN-EN 1994-1-1
- Exposure class XC1

These tables are indicative. Other spans / loading / U-value on request

DESIGN TABLES

Car Park Structure

Single span				Double span			
4000 mm	4500 mm	5000 mm	5500 mm	4000 mm	4500 mm	5000 mm	5500 mm

Width (b1)	80	80	80	80
Height (b1)	140	140	150	160
Flange thickness (h0)	60	60	60	60
Bottom bar reinforcement	Ø20	Ø20	Ø20	Ø20
Reinforcement mesh	#10 - 100	#10 - 100	#10 - 100	#10 - 100
Concrete grade	C30/37	C30/37	C30/37	C30/37
Concrete volume m ³ /m ²	0,094	0,094	0,096	0,098
Concrete weight kg/m ²	224,6	224,6	230,4	236,2

Width (b1)	80	80	80	80
Height (b1)	140	140	150	160
Flange thickness (h0)	60	60	60	60
Bottom bar reinforcement	Ø20	Ø20	Ø20	Ø20
Reinforcement mesh	#10 - 100	#10 - 100	#10 - 100	#10 - 100
Concrete grade	C30/37	C30/37	C30/37	C30/37
Concrete volume m ³ /m ²	0,094	0,094	0,096	0,098
Concrete weight kg/m ²	224,6	224,6	230,4	236,2

Width (b1)	80	80	80	100
Height (b1)	150	160	170	150
Flange thickness (h0)	60	60	60	60
Bottom bar reinforcement	Ø20	Ø20	Ø20	Ø20
Reinforcement mesh	#10 - 100	#10 - 100	#10 - 100	#10 - 100
Concrete grade	C30/37	C30/37	C30/37	C30/37
Concrete volume m ³ /m ²	0,096	0,098	0,101	0,105
Concrete weight kg/m ²	230,4	236,2	241,9	252,0

Total height incl. panel	280	280	290	300
Total own weight kg/m ²	244,6	244,6	250,4	256,2

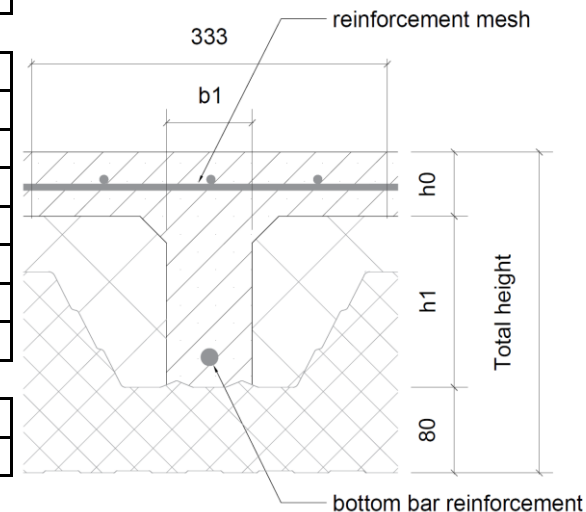
Total height incl. panel	280	280	290	300
Total own weight kg/m ²	244,6	244,6	250,4	256,2

Total height incl. panel	290	300	310	290
Total own weight kg/m ²	250,4	256,2	261,9	272,0

RC value m ² K/W	6,2	6,2	6,4	6,6
U-value W/mK	0,1610	0,1610	0,1556	0,1505

RC value m ² K/W	6,2	6,2	6,4	6,6
U-value W/mK	0,1610	0,1610	0,1556	0,1505

RC value m ² K/W	6,4	6,6	6,8	6,1
U-value W/mK	0,1556	0,1505	0,1457	0,1619



Assumptions:

Loading:

- Live load 2,50 kN/m²
- Concentrated load 10 kN
- Deflection 0,004 * span (max. 15 mm)

Berekeningsgrondslagen:

- Calculations conform NEN-EN 1990, NEN-EN 1991-1-1, NEN-EN 1992-1-1, NEN-EN 1994-1-1
- Exposure class XC1

These tables are indicative. Other spans / loading / U-value on request

www.reppel.nl / reppel@reppel.nl

DESIGN TABLES

Green roof

Single span				Double span			
4000 mm	4500 mm	5000 mm	5500 mm	4000 mm	4500 mm	5000 mm	5500 mm

Width (b1)
Height (b1)
Flange thickness (h0)
Bottom bar reinforcement
Reinforcement mesh
Concrete grade
Concrete volume m ³ /m ²
Concrete weight kg/m ²

60	60	60	60
140	140	160	160
50	50	50	50
Ø12	Ø16	Ø16	Ø20
#5 - 150	#6 - 150	#6 - 150	#7 - 150
C30/37	C30/37	C30/37	C30/37
0,075	0,075	0,079	0,079
180,5	180,5	189,1	189,1

80	80	80	80
140	140	170	170
50	50	50	60
Ø10	Ø12	Ø12	Ø16
#6 - 100	#6 - 100	#6 - 100	#8 - 150
C30/37	C30/37	C30/37	C30/37
0,084	0,084	0,091	0,101
200,6	200,6	217,9	241,9

Total height incl. panel
Total own weight kg/m ²

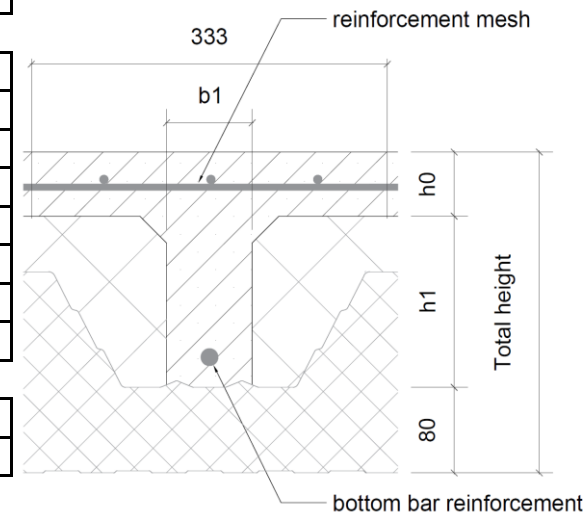
270	270	290	290
200,5	200,5	209,1	209,1

270	270	300	310
220,6	220,6	237,9	261,9

RC value m ² K/W
U-value W/mK

6,4	6,4	6,9	6,9
0,1552	0,1552	0,1447	0,1447

6,2	6,2	6,8	6,8
0,1611	0,1611	0,1458	0,1457



Assumptions:

Loading:

- Live load 5,00 kN/m²
- Deflection 0,004 * span (max. 15 mm)

Berekeningsgrondslagen:

- Calculations conform NEN-EN 1990, NEN-EN 1991-1-1, NEN-EN 1992-1-1, NEN-EN 1994-1-1
- Exposure class XC1

These tables are indicative. Other spans / loading / U-value on request

DESIGN TABLES

Retail building

Single span				Double span			
4000 mm	4500 mm	5000 mm	5500 mm	4000 mm	4500 mm	5000 mm	5500 mm

Width (b1)	60	60	60	60
Height (b1)	140	140	160	190
Flange thickness (h0)	50	50	50	50
Bottom bar reinforcement	Ø16	Ø20	Ø20	Ø20
Reinforcement mesh	#5 - 150	#6 - 200	#6 - 150	#6 - 150
Concrete grade	C30/37	C30/37	C30/37	C30/37
Concrete volume m ³ /m ²	0,075	0,075	0,079	0,084
Concrete weight kg/m ²	180,5	180,5	189,1	202,1

Width (b1)	60	60	60	60
Height (b1)	140	140	160	190
Flange thickness (h0)	50	50	50	50
Bottom bar reinforcement	Ø16	Ø20	Ø20	Ø20
Reinforcement mesh	#5 - 150	#6 - 200	#6 - 150	#6 - 150
Concrete grade	C30/37	C30/37	C30/37	C30/37
Concrete volume m ³ /m ²	0,075	0,075	0,079	0,084
Concrete weight kg/m ²	180,5	180,5	189,1	202,1

Width (b1)	60	60	80	80
Height (b1)	160	170	140	140
Flange thickness (h0)	50	60	60	60
Bottom bar reinforcement	Ø8	Ø10	Ø12	Ø16
Reinforcement mesh	#7 - 150	#8 - 200	#8 - 150	#8 - 100
Concrete grade	C30/37	C30/37	C30/37	C30/37
Concrete volume m ³ /m ²	0,079	0,091	0,094	0,094
Concrete weight kg/m ²	189,1	217,4	224,6	224,6

Total height incl. panel	270	270	290	320
Total own weight kg/m ²	200,5	200,5	209,1	222,1

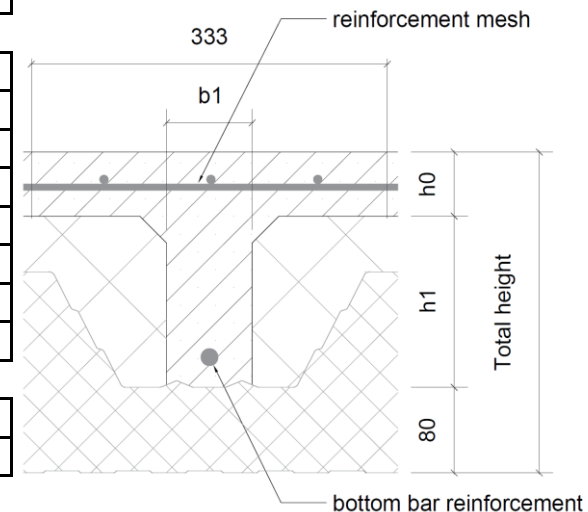
Total height incl. panel	270	270	290	320
Total own weight kg/m ²	200,5	200,5	209,1	222,1

Total height incl. panel	290	310	280	280
Total own weight kg/m ²	209,1	237,4	244,6	244,6

RC value m ² K/W	6,4	6,4	6,9	7,6
U-value W/mK	0,1552	0,1552	0,1447	0,1313

RC value m ² K/W	6,4	6,4	6,9	7,6
U-value W/mK	0,1552	0,1552	0,1447	0,1313

RC value m ² K/W	6,9	7,1	6,2	6,2
U-value W/mK	0,1447	0,1398	0,1610	0,1610



Assumptions:

Loading:

- Live load 4,00 kN/m²
- Deflection 0,004 * span (max. 15 mm)

Berekeningsgrondslagen:

- Calculations conform NEN-EN 1990, NEN-EN 1991-1-1, NEN-EN 1992-1-1, NEN-EN 1994-1-1
- Exposure class XC1

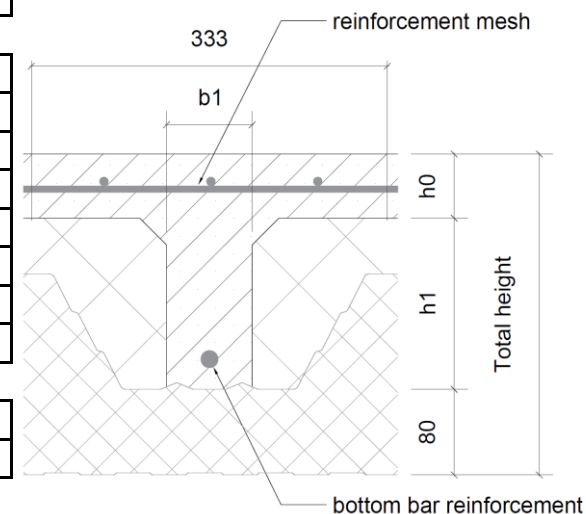
These tables are indicative. Other spans / loading / U-value on request

www.reppel.nl / reppel@reppel.nl

DESIGN TABLES

Domestic Housing

	Single span				Double span			
	4000 mm	4500 mm	5000 mm	5500 mm	4000 mm	4500 mm	5000 mm	5500 mm
Width (b1)	60	60	60	60	60	60	60	60
Height (b1)	140	140	140	160	140	140	140	140
Flange thickness (h0)	50	50	50	50	50	50	60	60
Bottom bar reinforcement	Ø10	Ø16	Ø20	Ø20	Ø8	Ø8	Ø10	Ø12
Reinforcement mesh	#5 - 200	#5 - 150	#5 - 150	#6 - 200	#7 - 150	#7 - 150	#8 - 150	#8 - 100
Concrete grade	C30/37	C30/37	C30/37	C30/37	C30/37	C30/37	C30/37	C30/37
Concrete volume m ³ /m ²	0,075	0,075	0,075	0,079	0,075	0,075	0,085	0,085
Concrete weight kg/m ²	180,5	180,5	180,5	189,1	180,5	180,5	204,5	204,5
Total height incl. panel	270	270	270	290	270	270	280	280
Total own weight kg/m ²	200,5	200,5	200,5	209,1	200,5	200,5	224,5	224,5
RC value m ² K/W	6,4	6,4	6,4	6,9	6,4	6,4	6,4	6,4
U-value W/mK	0,1552	0,1552	0,1552	0,1447	0,1552	0,1552	0,1551	0,1551



Assumptions:

Loading:

- Live load 2,50 kN/m²
- Light partitions 1,00 kN/m²
- Deflection 0,004 * span (max. 15 mm)

Berekeningsgrondslagen:

- Calculations conform NEN-EN 1990, NEN-EN 1991-1-1, NEN-EN 1992-1-1, NEN-EN 1994-1-1
- Exposure class XC1

These tables are indicative. Other spans / loading / U-value on request

www.reppel.nl / reppel@reppel.nl

DESIGN TABLES

Sports floor

Single span				Double span			
4000 mm	4500 mm	5000 mm	5500 mm	4000 mm	4500 mm	5000 mm	5500 mm

Width (b1)
Height (b1)
Flange thickness (h0)
Bottom bar reinforcement
Reinforcement mesh
Concrete grade
Concrete volume m ³ /m ²
Concrete weight kg/m ²

60	60	60	60
140	140	160	190
50	50	50	50
Ø12	Ø16	Ø20	Ø20
#6 - 150	#6 - 150	#6 - 150	#6 - 150
C30/37	C30/37	C30/37	C30/37
0,075	0,075	0,079	0,084
180,5	180,5	189,1	202,1

60	70	70	70
170	160	170	170
50	50	60	60
Ø10	Ø12	Ø12	Ø16
#7 - 150	#7 - 150	#8 - 150	#8 - 100
C30/37	C30/37	C30/37	C30/37
0,081	0,084	0,096	0,096
193,4	200,6	229,7	229,7

Total height incl. panel
Total own weight kg/m ²

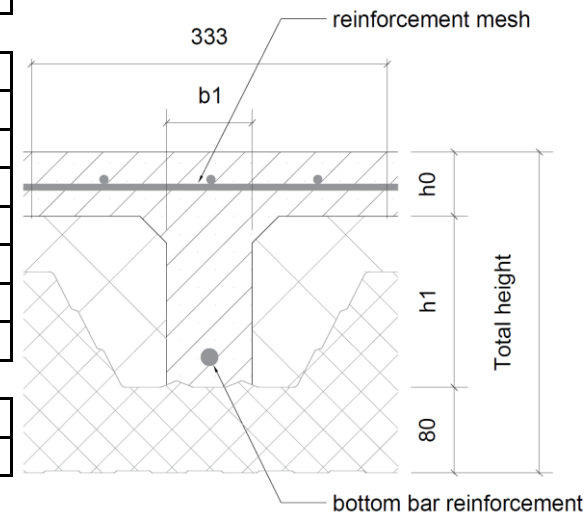
270	270	290	320
200,5	200,5	209,1	222,1

300	290	310	310
213,4	220,6	249,7	249,7

RC value m ² K/W
U-value W/mK

6,4	6,4	6,9	7,6
0,1552	0,1552	0,1447	0,1313

7,1	6,7	7,0	7,0
0,1399	0,1475	0,1427	0,1427



Assumptions:

Loading:

- Live load 5,00 kN/m²
- Vibration 5 Hz
- Deflection 0,004 * span (max. 15 mm)

Berekeningsgrondslagen:

- Calculations conform NEN-EN 1990, NEN-EN 1991-1-1, NEN-EN 1992-1-1, NEN-EN 1994-1-1
- Exposure class XC1

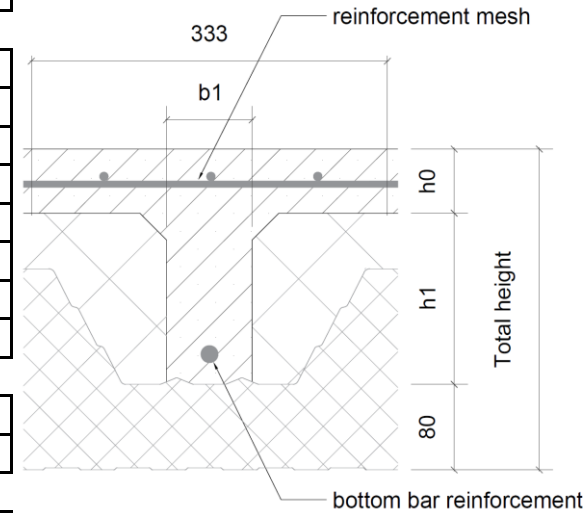
These tables are indicative. Other spans / loading / U-value on request

DESIGN TABLES

Roof

Single span				Double span			
4000 mm	4500 mm	5000 mm	5500 mm	4000 mm	4500 mm	5000 mm	5500 mm

Width (b1)	60	60	60	60	60	60	60	60
Height (b1)	140	140	140	140	140	140	140	140
Flange thickness (h0)	50	50	50	50	50	50	50	50
Bottom bar reinforcement	Ø8	Ø8	Ø10	Ø10	Ø6	Ø8	Ø8	Ø8
Reinforcement mesh	#6 - 150	#6 - 150	#6 - 150	#6 - 150	#6 - 150	#6 - 150	#6 - 150	#7 - 150
Concrete grade	C30/37	C30/37	C30/37	C30/37	C30/37	C30/37	C30/37	C30/37
Concrete volume m ³ /m ²	0,075	0,075	0,075	0,075	0,075	0,075	0,075	0,075
Concrete weight kg/m ²	180,5	180,5	180,5	180,5	180,5	180,5	180,5	180,5
Total height incl. panel	270	270	270	270	270	270	270	270
Total own weight kg/m ²	200,5	200,5	200,5	200,5	200,5	200,5	200,5	200,5
RC value m ² K/W	6,4	6,4	6,4	6,4	6,4	6,4	6,4	6,4
U-value W/mK	0,1552	0,1552	0,1552	0,1552	0,1552	0,1552	0,1552	0,1552



Assumptions:

Loading:

- Live load 1,00 kN/m²
- Deflection 0,004 * span (max. 15 mm)

Berekeningsgrondslagen:

- Calculations conform NEN-EN 1990, NEN-EN 1991-1-1, NEN-EN 1992-1-1, NEN-EN 1994-1-1
- Exposure class XC1

These tables are indicative. Other spans / loading / U-value on request